

## QUICK REFERENCE GUIDE FRIENDSHIP REGATTA 2025

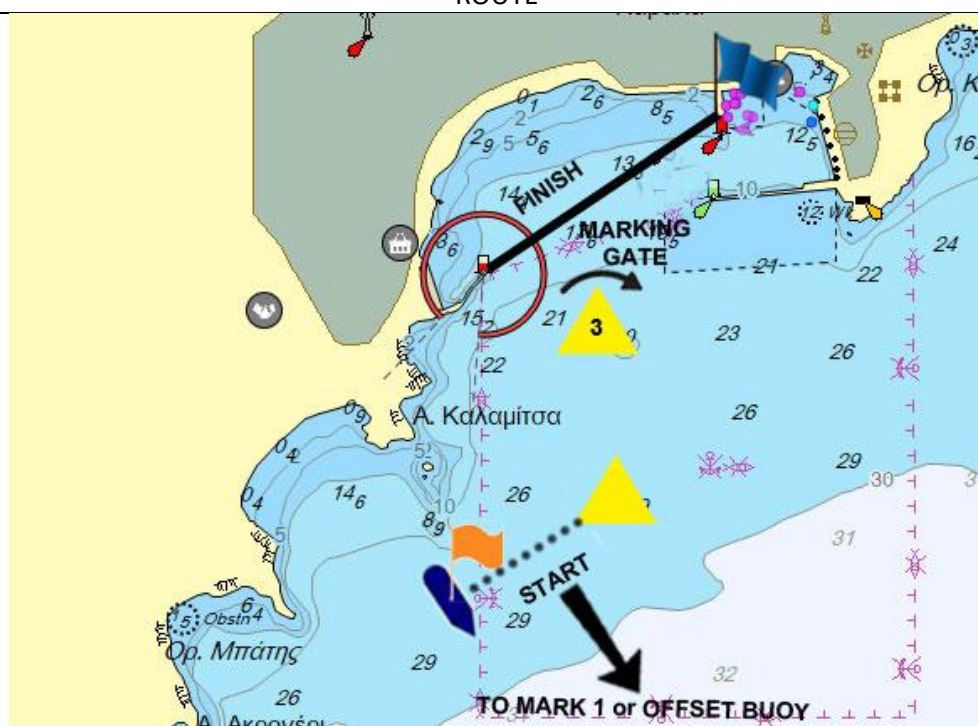
### Races 1 and 2 → Coastal triangular with marking gate «Kavala Cup»

Coastal races triangular with marking gate: Start – yellow mark #1 (starboard) –yellow mark #2 (starboard)- yellow mark #3 (starboard)(marking gate)- yellow mark #1 (starboard) – yellow mark #2 (starboard) – Finish. Distance 6/12 nm.

Alternatively, a windward-leeward course will be sailed at the discretion of R.C in accordance with paragraph 5.5 of S.I. In this case “W” flag will be raised on RC boat.



ROUTE

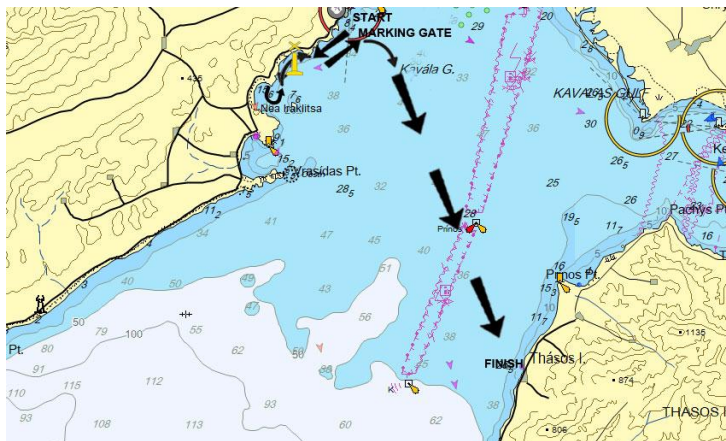


START  
MARKING GATE  
FINISH

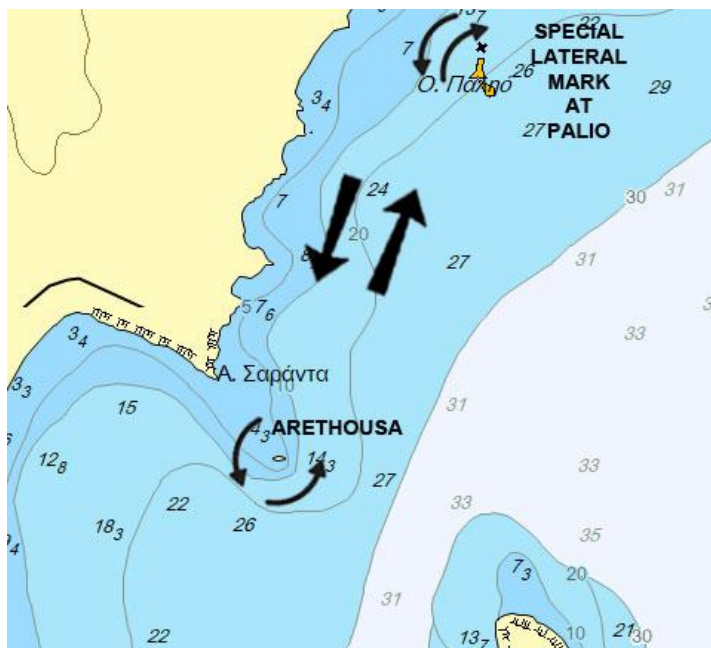
All diagrams are for illustration purposes only and may differ from reality.

**Races 3 and 4 → Kavala- Palio- Arethousa (Xifios)-Palio-Kavala -Kallirachi Thassos «Thassos Cup»**

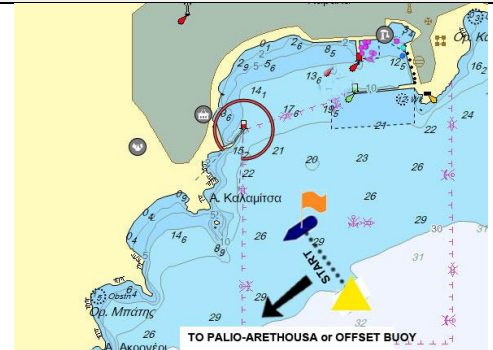
Start from Kavala, special purpose lateral mark at Palio bay in position 40°53,57N-024°20,71'E (to be left on port side), Arethousa (Xifios in position 40°52,62N-024°020,03'E) (to be left on port side), special purpose lateral mark at Palio bay in position 40°53,57N-024°020,71'E (to be left on starboard side), marking gate at Kavala, finish at Kallirachi Thassos. Distance 7/22 n.m.



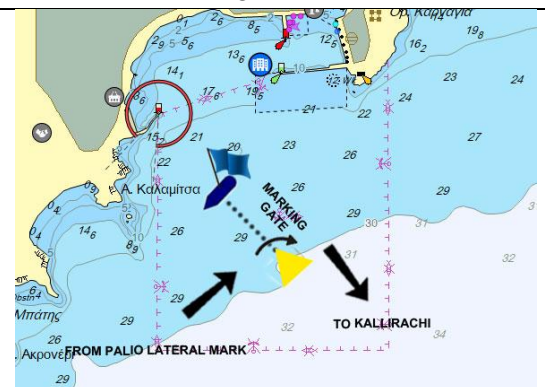
ROUTE



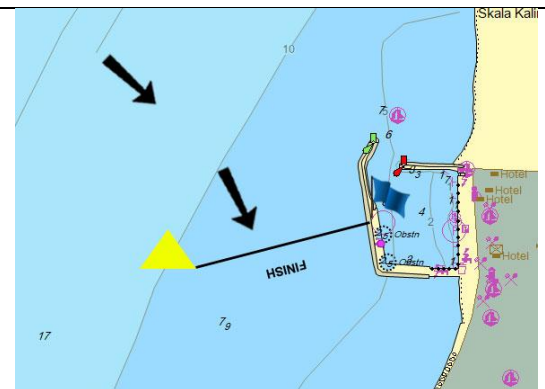
DETAIL OF ROUNDINGS AT PALIO AND ARETHOUSA (XIFIOS)



START



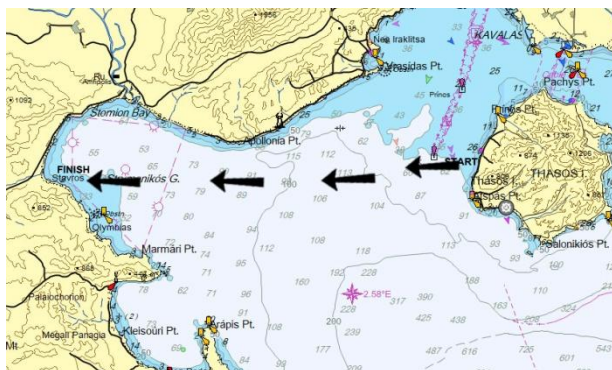
MARKING GATE



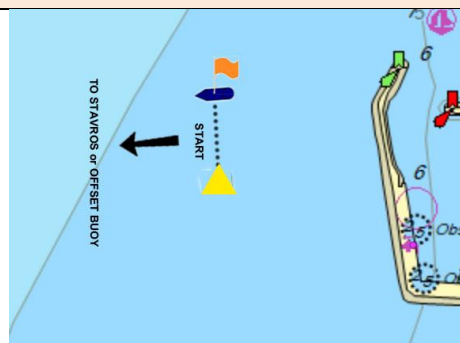
FINISH

### Race 5 → Offshore Kallirachi –Stavros Chalkidiki, First race of the series «Volvi Cup».

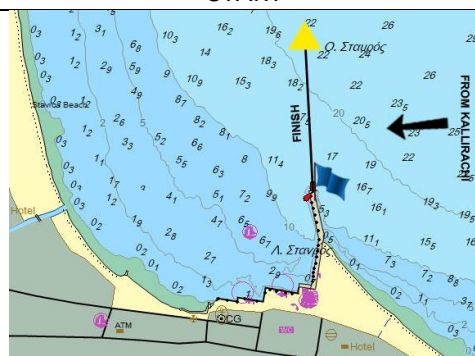
Offshore race. Start from Kallirachi, Finish at Stavros Chalkidiki. Distance 30 n.m



ROUTE



START

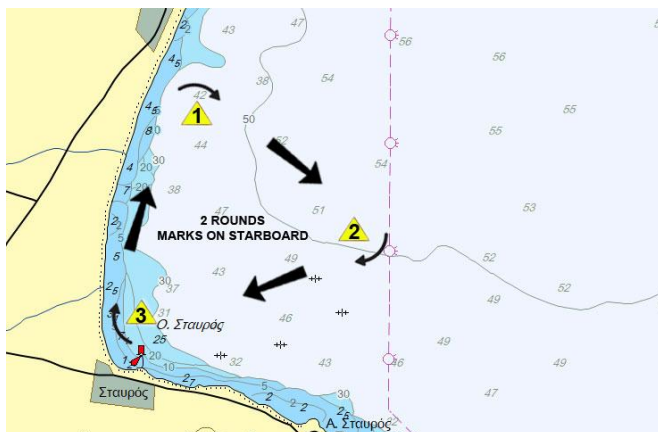


FINISH

### Races 6 and 7 → Coastal triangular with marking gate third and fourth races of the series «Volvi Cup»

Coastal races triangular with marking gate: Start – yellow mark #1 (starboard) –yellow mark #2 (starboard)- yellow mark #3 (starboard)(marking gate)- yellow mark #1 (starboard) – yellow mark #2 (starboard) – Finish. Distance 6/12 nm.

Alternatively, a windward-leeward course will be sailed at the discretion of R.C in accordance with paragraph 5.5 of S.I. In this case “W” flag will be raised on RC boat.



ROUTE



START



MARKING GATE



FINISH

All diagrams are for illustration purposes only and may differ from reality.



### Alternative route for races 1,2 and 6,7

Coastal triangular races can be replaced by technical windward-leeward route with marking gate at RC discretion. : Start – yellow mark #1 (port) –yellow mark #2 (port) (marking gate) - yellow mark #1 (port)– Finish. Distance 6/12 nm.

In this case “W” flag will be raised on RC boat.

The start line is defined by orange flag on RC boat on starboard end and yellow buoy on port end.

The marking gate is defined by orange flag on RC boat on starboard end and yellow buoy on port end.

The finish line is defined by blue flag on RC boat on port end and yellow buoy on starboard end.

